



DEPARTMENT OF THE NAVY
OFFICE OF THE CHIEF OF NAVAL OPERATIONS
2000 NAVY PENTAGON
WASHINGTON DC 20350-2000

OPNAVINST 3501.387B CH-1
N09C
7 Jun 2019

OPNAV INSTRUCTION 3501.387B CHANGE TRANSMITTAL 1

From: Chief of Naval Operations

Subj: REQUIRED OPERATIONAL CAPABILITIES AND PROJECTED OPERATIONAL ENVIRONMENT FOR NAVY PUBLIC AFFAIRS SUPPORT ELEMENT

Encl: (1) Revised Page 3 of Enclosure (2)
(2) New Page 4 of Enclosure (3)
(3) Revised Page 1 of Enclosure (4)

1. Purpose. To transmit revised page 3 of enclosure (2); new page 4 of enclosure (3); and revised page 1 of enclosure (4), which provides updated capability as a result of added mission requirements. Specific changes adds the required operational capability to conduct underwater search operations with video and still cameras; and a unit type code underwater documentation team (UTC L7UWT) to provide underwater photography and videography in support of search, salvage, and rescue operations.
2. Action. Remove page 3 of enclosure (2) and page 1 of enclosure (4) of the basic instruction and insert enclosure (1), enclosure (2), and enclosure (3), respectively, of this change transmittal.
3. Records Management
 - a. Records created as a result of this change transmittal, regardless of format or media, must be maintained and dispositioned per the records disposition schedules located on the Department of the Navy/Assistant for Administration (DON/AA), Directives and Records Management Division (DRMD) portal page at <https://portal.secnav.navy.mil/orgs/DUSNM/DONAA/DRM/Records-and-Information-Management/Approved%20Record%20Schedules/Forms/AllItems.aspx>.
 - b. For questions concerning the management of records related to this change transmittal or the records disposition schedules, please contact the local records manager or the DON/AA DRMD program office.

A handwritten signature in black ink, appearing to read "C.W. Brown", is located below the text.

C.W. BROWN
Chief of Information

OPNAVINST 3501.387B CH-1
7 Jun 2019

Releasability and distribution:

This change transmittal is cleared for public release and is available electronically only via Department of the Navy Issuances Web site, [http:// www.secnav.navy.mil/doni](http://www.secnav.navy.mil/doni)



DEPARTMENT OF THE NAVY
OFFICE OF THE CHIEF OF NAVAL OPERATIONS
2000 NAVY PENTAGON
WASHINGTON, DC 20350-2000

OPNAVINST 3501.387B
N09C
1 May 2017

OPNAV INSTRUCTION 3501.387B

From: Chief of Naval Operations

Subj: REQUIRED OPERATIONAL CAPABILITIES AND PROJECTED
OPERATIONAL ENVIRONMENT FOR NAVY PUBLIC AFFAIRS SUPPORT
ELEMENT

Ref: (a) OPNAVINST C3501.2K (NOTAL)
(b) OPNAVINST 3501.360A
(c) OPNAVINST 3000.13D

Encl: (1) Projected Operational Environment (POE) for Navy Public Affairs Support Element (NPASE)
(2) Required Operational Capabilities (ROC) for Navy Public Affairs Support Element (NPASE)
(3) Unit Type Code (UTC) Descriptions For Navy Public Affairs Support Element (NPASE)
(4) NPASE UTC Requirements Chart

1. Purpose. To issue the required operational capabilities (ROC) and the projected operational environment (POE) for the Navy Public Affairs Support Element (NPASE). This instruction is a complete revision and should be reviewed in its entirety. Specific changes are summarized in subparagraphs 1a through 1e.

- a. Identifies unit type codes' (UTC) manpower and Navy enlisted classification (NEC) requirements to assist planners when requesting NPASE support.
- b. Defines three readiness states as readiness state I, II or III.
- c. Modifies primary (P) and secondary (S) warfare mission areas in the ROC.
- d. Defines NPASE Selected Reserve (SELRES) support as necessary to execute surge, backfill, and special missions, and includes SELRES manpower in the UTC tables.
- e. Adds an NPASE UTC requirements chart to depict NPASE manpower requirements.

2. Cancellation. OPNAVINST 3501.387A.

3. Background

a. NPASE serves as a standing expeditionary Navy public affairs (PA), visual information (VI) and communication integration support capability. NPASE is organized, trained, and equipped to maintain worldwide deployable and non-deployable PA and VI forces made up of active duty and reserve personnel to support the Secretary of the Navy (SECNAV), Chief of Naval Operations (CNO), and Chief of Information (CHINFO), as well as fleet, regional, Navy component, and joint combatant commanders with PA and VI capabilities. All NPASE forces are expeditionary and are immediately deployable to support current and emerging PA and VI requirements.

b. NPASE headquarters must provide resources, support, and guidance to all centers and detachments so they can deliver trained and equipped forces to conduct operational and tactical PA and VI. This capability includes broadcast, print journalism and multimedia production, communication assessment, as well as hand-held still and video imaging capabilities to document force deployments, activities, and operations for the attainment of naval, military, and national objectives.

4. Scope and Applicability

a. Enclosures (1) through (4) have been prepared pursuant to reference (a). The ROC and POE describe the mission areas, and environment and operational capabilities for which the NPASE staff and its elements were designed and organized. This instruction provides resource agencies with information concerning the NPASE mission requirements, capabilities, and the types and locations of expected operations. Together, the ROC and POE statements establish tasking which produces a measureable workload used to compute personnel requirements for fleet manpower documents (FMD).

b. Per reference (a), ROC and POE statements specify resource requirements necessary for warfare; they are not limited by fiscal constraints.

c. Per reference (b), NPASE must report readiness to CHINFO, the immediate superior in command (ISIC), using the Defense Readiness Reporting System-Navy. Enclosures (1) through (4) will assist in determining specific capability area reporting.

d. Per reference (c), NPASE must monitor personnel tempo (PERSTEMPO) of individual Sailors and report PERSTEMPO program data to CHINFO via official letter.

5. Action. NPASE will periodically review this instruction and recommend changes to the CNO, Special Assistant for Public Affairs Support (N09C), when the capability of the NPASE is significantly altered. Change recommendations should include comments on the expected FMD impacts.

6. Records Management. Records created as a result of this instruction, regardless of media or format, must be managed per SECNAV Manual 5210.1 of January 2012.

7. Review and Effective Date. Per OPNAVINST 5215.17A, N09C will review this instruction annually on the anniversary of its issuance date to ensure applicability, currency, and consistency with Federal, Department of Defense (DoD), SECNAV, and Navy policy and statutory authority using OPNAV 5215/40. This instruction will automatically expire 5 years after its issuance date unless reissued or canceled prior to the 5-year anniversary date, or an extension has been granted.



D. E. CUTLER
Chief of Information

Releasability and distribution:

This instruction is cleared for public release and is available electronic only via Department of the Navy Issuances Web site, <http://doni.documentservices.dla.mil/>

PROJECTED OPERATIONAL ENVIRONMENT (POE)
FOR
NAVY PUBLIC AFFAIRS SUPPORT ELEMENT (NPASE) CENTERS

1. NPASE centers and subordinate detachments are operational units that report to NPASE headquarters for all administrative and operational oversight. The supported commander will exercise operational and tactical control over assigned NPASE personnel.
2. NPASE personnel deploy as detachments. The capability of each detachment is described in enclosure (3) by a UTC, which identifies the number of personnel and the individual skill sets required. NPASE detachments can be any mix of public affairs officer (PAO) and mass communication specialist (MC) personnel depending upon tasking. NPASE detachments are tasked and organized by the supported commander to communicate the role and operations of the U.S. maritime forces with timely and factual information and imagery for release to internal and external audiences (to include the media). NPASE detachments must be manned, trained, and equipped to be expeditionary for up to 30 days.
3. Overseas-based personnel assigned to NPASE Detachment Europe and NPASE Center Japan support forward-deployed naval forces in the U.S. 6th Fleet and U.S. 7th Fleet areas of responsibility, respectively.
4. When deployed in support of operations ashore, NPASE forces will normally operate where a military command structure and adequate security have already been established.
5. The most demanding projected operating environments will be when operating from a remote shore location for operations other than war and from a deployed ship during a time of conflict in a wartime environment.
6. NPASE centers are echelon 3 commands led by an O-4 officer in charge (OIC) that reports directly to the commanding officer, NPASE headquarters. NPASE centers are listed in subparagraphs 6a through 6c.
 - a. NPASE East, Norfolk, VA (unit identification code (UIC): 68406).
 - b. NPASE West, San Diego, CA (UIC: 68407).
 - c. NPASE Japan, Yokosuka, Japan (UIC: 66777).
7. NPASE centers must:
 - a. serve as the ISIC with administrative and operational control of subordinate NPASE detachments;

- b. deploy personnel under appropriate UTCs to support PA and VI requirements in response to request for support (RFS), request for forces (RFF), and global force management (GFM) tasking;
- c. equip personnel to support PA and VI requirements in response to RFS, RFF, and GFM;
- d. train personnel to work independently or as a team to support PA and multimedia requirements, and provide tailored training to PA and VI personnel assigned to fleet commands and PA offices ashore;
- e. serve as an initial training and development command for all assigned active and newly accessioned SELRES PA officers to provide them with fleet operational experience;
- f. maintain a permanent shore rear echelon support element for active and reserve component supply, equipment management, training, and administrative support of all deployable elements within the center and its detachments;
- g. provide PA and VI support to Navy shore activities within the NPASE centers' geographic areas;
- h. maintain support from deployable and non-deployable SELRES personnel who are trained and equipped to execute surge, backfill, and special missions per DoD Instruction 1235.12 of 7 June 2016; and
- i. maintain and operate portable systems to support the transmission of time-sensitive information, imagery products, and real-time, live broadcasts.

8. NPASE centers may establish and maintain detachments within their geographic area of responsibility in order to support routine and emergent requirements and as operations dictate. Those detachments are echelon 4 commands and are normally led by an E-7 or E-8 chief petty OIC that reports directly to their respective NPASE center OIC. In particular, NPASE detachments would be located outside of fleet concentration areas to support forces in regions such as Navy Region Southeast or Navy Region Northwest and numbered fleet areas of responsibility such as U.S. 4th Fleet or U. S. 6th Fleet.

REQUIRED OPERATIONAL CAPABILITIES (ROC)
FOR
NAVY PUBLIC AFFAIRS SUPPORT ELEMENT (NPASE) CENTERS

1. Mission

a. The mission of NPASE centers is to train, equip, and employ worldwide deployable and non-deployable PA and VI forces, made up of active duty and reserve personnel to support the SECNAV, CNO, and CHINFO, as well as fleet, regional, Navy component, and joint combatant commanders with PA and VI capabilities. All NPASE forces are immediately deployable to support current and emerging PA and VI requirements. This includes providing individuals and detachments trained in PA and VI planning, execution and assessment; broadcast and print journalism; multimedia production; and specialized hand-held imaging capabilities to document force deployments and activities of the Navy, and when tasked, other Services, for the attainment of naval, military, and national objectives.

b. “Deployed” is defined as when an individual, a UTC, or a number of UTCs, called to duty by orders (RFS, GFM tasking, or verbally by the NPASE commanding officer) to perform their specified mission out-of-area for any duration.

c. Primary missions are those missions a unit was established to perform during its wartime role. Secondary missions are those missions that a unit could be expected to perform but are not essential to carry out its wartime role. Accordingly, the P and S warfare mission areas in this table are assigned:

NPASE CENTERS							
CCC	EXW	FSO	INT	LOG	MOB	MOS	NCO
P	P	P	S	P	P	P	P

Note: CCC = command, control, and communications; EXW = expeditionary warfare; FSO = fleet support operations; INT = intelligence; LOG = logistics; MOB = mobility; MOS = missions of state; NCO = noncombat operations.

2. Operational and Sub-Operational Capabilities. ROCs are reported under readiness conditions having major significance in determining the unit’s total manpower requirements. For NPASE centers and detachments, there are three readiness states as per subparagraphs 2a through 2c.

a. Readiness State I: Able to perform all functions simultaneously; able to keep all PA and VI systems manned and operating for maximum effectiveness. All vital positions will be manned to sustain operations indefinitely once SELRES augmentation is in place.

b. Readiness State II: Able to perform multiple PA and VI functions necessary to support higher headquarters tasking, however are not required to be accomplished simultaneously; keep

required PA and VI systems continuously manned and operating; perform other command and control functions relevant to the mission; and able to accomplish urgent planned maintenance and support functions. The maximum expected continuous duration for readiness state II is 10 consecutive days, with a minimum of 4 to 6 hours of rest provided per man per day.

c. Readiness State III: Able to keep PA and VI systems manned and operating as necessary to conform with prescribed ROCs; able to meet anticipated homeguard emergencies and perform homeguard functions as prescribed by unit ROCs; accomplish all normal support and administrative functions. Maximum advantage is taken of training and exercise opportunities. Personnel are considered deployed when providing out-of-area support for any duration. Expected endurance is not constrained by personnel. Ability to immediately change readiness posture to readiness state I or II is expected. Subject to the foregoing requirements, personnel will be provided maximum opportunity for rest, leave, and liberty.

3. Capability Levels. The ROC table in this enclosure displays the capabilities of NPASE personnel and UTCs when in a “deployed” readiness condition only. ROC capability symbols (“F” Full or “L” Limited) are used to define or clarify their level of ability to perform that capability when conducting their wartime mission.

a. “F” = “Full.” The capability is to be fully achieved. For operational functions (watches), this means that installed equipment or systems will be fully manned to design capability. For support functions, sufficient manning is provided to ensure effective accomplishment of all included tasks. The achievement is to be sustained for the duration of the condition.

b. “L” = “Limited.” The capability is to be only partially realized. Even though only limited capability is realized, it is to be sustained for the duration of the condition. Every “L” must be supported by a limiting statement specifying the limitation.

REQUIRED OPERATIONAL CAPABILITIES

ROC	NAVY PUBLIC AFFAIRS COMMAND CENTERS	READINESS STATE		
		I	II	III
COMMAND, CONTROL AND COMMUNICATIONS (CCC)				
CCC 2	COORDINATE AND CONTROL THE OPERATIONS OF THE TASK ORGANIZATION OR FUNCTIONAL FORCE TO CARRY OUT ASSIGNED MISSIONS			
CCC 2.30	Provide Navy liaison officers to support joint/combined operations centers. L- (I, II, III) – Provide designated PAOs (165x) only.	L	L	L
CCC 3	PROVIDE OWN UNIT'S COMMAND AND CONTROL FUNCTIONS			
CCC 3.3	Provide all personnel, services, programs and facilities to safeguard classified material and information.	F	F	F
CCC 3.4	Carry out emergency destruction of classified material and equipment rapidly and efficiently.	F	F	F
CCC 6	PROVIDE COMMUNICATIONS FOR OWN UNIT			
CCC 6.19	Provide tactical, secure voice or data communications. L (I, II, III) – Limited to imagery transmission systems.	L	L	L
EXPEDITIONARY WARFARE (EXW)				
EXW 6	MAINTAIN EXPEDITIONARY COMMUNICATIONS CAPABILITY			
EXW 6.1	Set up and maintain a mobile communication system. NOTE: Procure and Manage TOA.	F	F	F
FLEET SUPPORT OPERATIONS (FSO)				
FSO 5	CONDUCT TOWING/SEARCH/SALVAGE/RESCUE OPERATIONS	F	F	F
FSO 5.12	Conduct underwater search operations with video and/or still cameras.	F	F	F
FSO 46	MONITOR ASSIGNED UNITS' ADMINISTRATIVE PROCEDURES	F	F	F
FSO 47	MONITOR ASSIGNED UNITS' OPERATIONAL PROCEDURES	F	F	F
FSO 48	MONITOR ASSIGNED UNITS' MATERIAL READINESS	F	F	F

ROC	NPASE CENTERS	READINESS STATE		
		I	II	III
FSO 51	REPAIR OWN UNITS' FSO-RELATED EQUIPMENT L (I, II, III) – Ship to NPASE Headquarters to facilitate repairs.	L	L	L
FSO 55	MAINTAIN READINESS BY PROVIDING FOR TRAINING OF OWN UNITS' PERSONNEL		F	F
FSO 69	CONDUCT PUBLIC AFFAIRS TASKS			
FSO 69.1	Provide counsel on PA and communication to commanders and their staffs, and to PA personnel at senior and subordinate commands.	F	F	F
FSO 69.2	Research and develop communication strategies and plans to support Navy and joint policies, programs and operations.	F	F	F
FSO 69.3	Coordinate plans and execution with public affairs personnel of Navy, joint and coalition commands, other U.S. government agencies, intergovernmental and non-governmental bodies, and other organizations applicable to the mission.	F	F	F
FSO 69.4	Create written, visual and multimedia information products supporting the execution of communication plans.	F	F	F
FSO 69.5	Execute communication plans, to include the dissemination of timely and accurate written, visual and multimedia information to internal, U.S. domestic and international audiences and media.	F	F	F
FSO 69.6	Assess the effect of PA activities. NOTE: Detailed assessments of the effects of communication activities often require significant survey teams, working over a protracted period to measure change of target audience knowledge, attitudes and behavior pre and post-event. This capability may be limited to measuring PA activities and effects of a more tactical nature, depending on target audiences, security environment and mission duration.	F	F	F
FSO 69.7	Conduct community outreach activities with U.S. and international local, regional and national communities and organizations.	F	F	F
FSO 69.8	Enable media and public access to units at sea and ashore to increase public understanding of military activities and objectives.	F	F	F

ROC	NPASE CENTERS	READINESS STATE		
		I	II	III
FSO 74	CONDUCT/SUPPORT VISUAL INFORMATION DOCUMENTATION (VIDOC) USING DIGITAL STILL AND MOTION DATA			
FSO 74.1	Conduct VIDOC in support of: (a) Combat Operations (b) Operational Requirements (c) Technical Evaluations	F	F	F
FSO 74.2	Provide the following imaging services: (a) Hand-held acquisition (b) Processing (c) Printing	F	F	F
FSO 74.3	Provide motion media editing, sound mixing and duplication services.	F	F	F
FSO 74.5	Provide secure and/or unsecure electronic image transmission services. NOTE: UNCLASS only	F	F	F
FSO 74.6	Provide technical guidance and assistance to fleet units in photographic acquisition and production.	F	F	F
FSO 74.7	Provide night imagery capability.	F	F	F
INTELLIGENCE (INT)				
INT 1	SUPPORT/CONDUCT INTELLIGENCE COLLECTION			
INT 1.3	Support/conduct imagery intelligence information collection at short and long range utilizing organic/non-organic, or assigned imagery sensors and onboard imagery processing systems.	F	F	F
LOGISTICS (LOG)				
LOG 14	ASSESS FORCE/ GROUP QUALITATIVE AND QUANTITATIVE MANPOWER STRENGTH	F	F	F
MOBILITY (MOB)				
MOB 8	OPERATE FROM A SHIP			
MOB 8.1	Operate from an aircraft carrier.	F	F	F

ROC	NPASE CENTERS	READINESS STATE		
		I	II	III
MOB 8.2	Operate from a ship with a helo platform.	F	F	F
MOB 8.4	Operate from a combatant craft.	F	F	F
MOB 8.6	Operate from merchant ships and indigenous craft.	F	F	F
MOB 8.7	Operate from a ship capable of supporting air control activities in support of amphibious operations.	F	F	F
MOB 8.8	Operate from a well deck equipped amphibious ship.	F	F	F
MOB 8.10	Operate from utility and amphibious craft supporting construction operations.	F	F	F
MOB 8.12	Operate from an amphibious assault ship (LHD) or amphibious assault ship (general purpose) (LHA).	F	F	F
MOB 11	MAINTAIN MOUNT-OUT CAPABILITIES			
MOB 11.1	Deploy with organic allowance within designated time period.	F	F	F
MOB 11.2	Mount-out selected elements/detachments.	F	F	F
MOB 13	MAINTAIN RESERVE UNIT MOBILIZATION READINESS (ACTIVE RESERVE UNITS ONLY)			
MOB 13.1	Ensure personnel onboard and their associated records are ready for immediate mobilization.	F	F	F
MOB 13.2	Ensure organic equipment (Preposition war reserve stock situated at Navy Operational Support Centers or Reserve training sites) and associated records are ready for immediate mobilization.	F	F	F
MOB 13.3	Conduct immediate crisis response. Note: Maintain a SELRES Support Division for deployable assets to support NPASE and Fleet missions and tasking for worldwide requirements.	F	F	F

ROC	NPASE CENTERS	READINESS STATE		
		I	II	III
MOB 13.4	Plan, coordinate and direct training for SELRES.	F	F	F
MOB 13.5	Assess the activation and movement of SELRES.	F	F	F
MOB 14	CONDUCT OPERATIONS ASHORE			
MOB 14.1	Operate in climate extremes ranging from severe cold weather to hot-humid (tropical) to hot-dry (desert) and coastal/ocean environments.	F	F	F
MOB 14.2	Operate in rear of combat zone in afloat prepositioning force or Marine expeditionary brigade operations.	F	F	F
MOB 14.5	Conduct peacetime activation, mount-out and movement exercises of selected personnel and equipment to ensure capability of contingencies involving naval forces short of a general war.	F	F	F
MOB 14.7	Provide qualified personnel to conduct site survey.	F	F	F
MISSIONS OF STATE (MOS)				
MOS 1	PERFORM NAVAL DIPLOMATIC PRESENCE OPERATIONS			
MOS 1.2	Conduct force/unit tour for foreign dignitaries. L (I, II, III) – Limited to PA and VI support to force/unit.	L	L	L
MOS 1.5	Conduct force/unit tours for foreign citizens during port calls. L (I, II, III) – Limited to PA and VI support to force/unit.	L	L	L
MOS 1.8	Participate in military exercises with allied nations. L (I, II, III) – Limited to PA and VI support to force/unit.	L	L	L
MOS 1.9	Participate in military exercises with non-allied nations. L (I, II, III) – Limited to PA and VI support to force/unit.	L	L	L

ROC	NPASE CENTERS	READINESS STATE		
		I	II	III
MOS 1.10	Participate in or provide participants for foreign/allied commemorative or ceremonial events. L (I, II, III) – Limited to PA and VI support to force/unit.	L	L	L
MOS 1.12	Coordinate and conduct passing exercises (passes) to include: projection of force transit availability, procedures development, draft MOA and peacetime standard operating procedure discussions with foreign navies. L (I, II, III) – Limited to PA and VI support to force/unit.	L	L	L
MOS 2	PROVIDE HUMANITARIAN ASSISTANCE			
MOS 2.10	Support/provide for the evacuation of noncombatant personnel in areas of civil or international crisis. L (I, II, III) – Limited to PA and VI support to force/unit.	L	L	L
MOS 8	PROVIDE AT ASSISTANCE			
MOS 8.11	Prepare PA material for terrorist situations.	F	F	F
MOS 8.12	Conduct unit pre-deployment/pre-overseas travel AT awareness training for: (a) Unit (b) Detachment (c) Temporary Assigned Duty (TAD)/ Temporary Duty (TDY) personnel (d) Permanent Change of Station (PCS) (to overseas locations) (e) Leave	F	F	F
NONCOMBAT OPERATIONS (NCO)				
NCO 2	PROVIDE ADMINISTRATIVE AND SUPPLY SUPPORT FOR OWN UNIT			
NCO 2.1	Provide supply support services.	F	F	F
NCO 2.2	Provide clerical services.	F	F	F

ROC	NPASE CENTERS	READINESS STATE		
		I	II	III
NCO 2.7	Provide inventory and custodial services. NOTE: A portion of custodial services are contracted.	F	F	F
NCO 10	PROVIDE EMERGENCY/DISASTER ASSISTANCE			
NCO 10.9	Provide emergency broadcast equipment.	F	F	F
NCO 10.11	Provide VIDOC support services.	F	F	F
NCO 11	SUPPORT/PROVIDE FOR THE EVACUATION OF NON-COMBATANT PERSONNEL IN AREAS OF CIVIL OR INTERNATIONAL CRISIS			
NCO 11.6	Provide VIDOC support services.	F	F	F

UNIT TYPE CODE (UTC) DESCRIPTIONS FOR
NAVY PUBLIC AFFAIRS SUPPORT ELEMENT (NPASE)

1. Unit Type Code (UTC). UTCs are alphanumeric codes assigned to operational entities within the United States Armed Forces, and are used to identify personnel and equipment to complete force deployment packages.

2. UTC Teams. NPASE personnel deploy as individuals or as members of one of five basic UTCs. Grey boxes indicate additional reserve forces that may be required in condition I. The UTCs may be modified to meet specialized PA and VI support. The capability of each team is described in subparagraphs 2a through 2e.

a. Sea Operations Detachment Team (UTC L7SDT). Provides PA and VI planning and multimedia production to support carrier strike group, or amphibious readiness group deployments. Capable of integrating into shipboard media departments and divisions. The team may disaggregate to support strike or readiness group units operating separate from the aircraft carrier or flagship.

	DESIGNATOR RATE/GRADE	Naval Officer Billet Classification Primary NEC/ Secondary NEC
L7SDT (Sea Operations Detachment Team)- 18 Teams		
PAO/Detachment Officer in Charge (DET OIC)	1650/LT	2412
Leading Chief Petty Officer	CPO	8152/8145
Videographer	PO2	8143/8288
Photojournalist	PO2	8147
Content Manager	PO2	8145
PA Specialist	PO3	

Reserve Component (RC) Augmentation

PAO/DET OIC	1655/LT (RC)	2412
Leading Petty Officer	PO1 (RC)	
Videographer/Photographer	PO2 (RC)	
Photojournalist	PO2 (RC)	

b. Multimedia Team (UTC L7MMT). Provides PA and VI support to units without an organic capability at sea or ashore.

	DESIGNATOR RATE/GRADE	Naval Officer Billet Classification Primary NEC/ Secondary NEC
L7MMT (Multimedia Team)- 24 Teams		
Videographer	PO1	8143
Photojournalist	PO2	8147

c. Multimedia Response Team (UTC L7MRT). Responds within 24 hours to urgent Navy component commander, combatant commander, and joint task force tasking for a maximum of 30 days. Provides PA and VI support for emergent operations, such as humanitarian assistance and disaster relief and defense support of civil authorities.

	DESIGNATOR RATE/GRADE	Naval Officer Billet Classification Primary NEC/ Secondary NEC
L7MRT (Multimedia Response Team)- 4 Teams		
PAO/DET OIC	1650/LT	2412
Assistant OIC/Crew Chief	CPO	8152
Videographer	PO1	8143/8145
Photojournalist	PO2	8147
Graphic Illustrator	PO2	8193
Public Affairs Specialist	PO3	

d. Advanced Coordination Team (UTC L7ACT). Provides PA and VI planning, coordination, and assessment in support of routine and emergent operations.

	DESIGNATOR RATE/GRADE	Naval Officer Billet Classification Primary NEC/ Secondary NEC
L7ACT (Advance Coordination Team)- 15 Teams		
PAO/Planner	1650/LT-ENS	2412
Assistant PAO/Planner	CPO	8152

Reserve Augmentation

PAO/DET OIC	1655/LT (RC)	
Leading Chief Petty Officer	CPO (RC)	

e. Expeditionary Broadcast Team (UTC L7BCT). Produces PA and VI products and operates portable communication systems to deliver time-sensitive content, including live-broadcast capability.

	DESIGNATOR RATE/GRADE	Naval Officer Billet Classification Primary NEC/ Secondary NEC
L7BCT (Expeditionary Broadcast Team)- 10 Teams		
Crew Chief	CPO	8152
Videographer	PO1	8143/8145
Broadcaster	PO2	8142

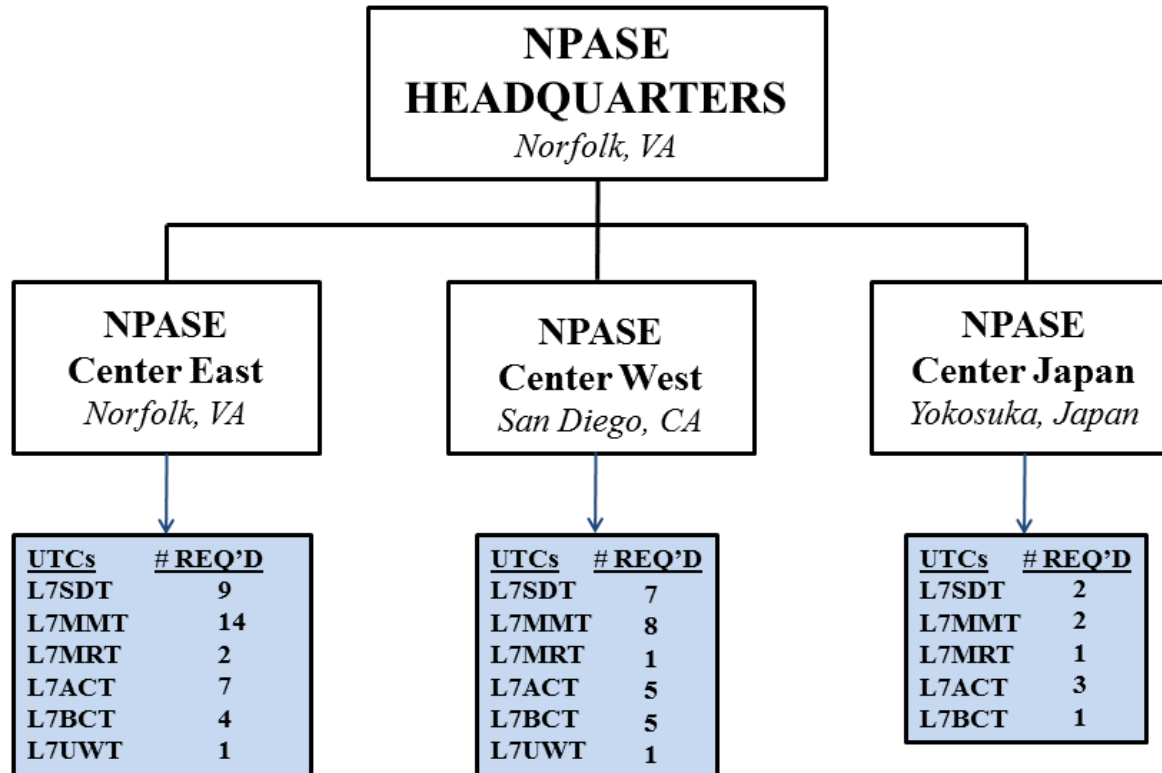
Reserve Augmentation

Videographer/Photographer	PO1 (RC)	
---------------------------	----------	--

f. Underwater Documentation Team (UTC L7UWT). Provides underwater photography, videography and communication capability during contingency, damage assessment and disaster response in support of search, salvage, rescue, and other underwater operations.

	DESIGNATOR RATE/GRADE	Naval Officer Billet Classification Primary NEC/ Secondary NEC
L7UWT (Underwater Documentation Team)- 2 Teams		
Self-contained Underwater Breathing Apparatus (SCUBA)/Underwater Photographer	PO1	5345/A04A
SCUBA/Underwater Photographer	PO2	5345/A04A

NPASE UTC REQUIREMENTS CHART



NOTE: L7SDT (Sea Operations Detachment Team), L7MMT (Multimedia Team), L7MRT (Multimedia Response Team), L7ACT (Advance Coordination Team), L7 BCT (Expeditionary Broadcast Team), L7UWT (Underwater Documentation Team). # REQ'D is number of required teams. In addition to the RC assigned to NPASE UTCs, NPASE centers have shore-based RC divisions to provide surge, backfill and special mission support as required.